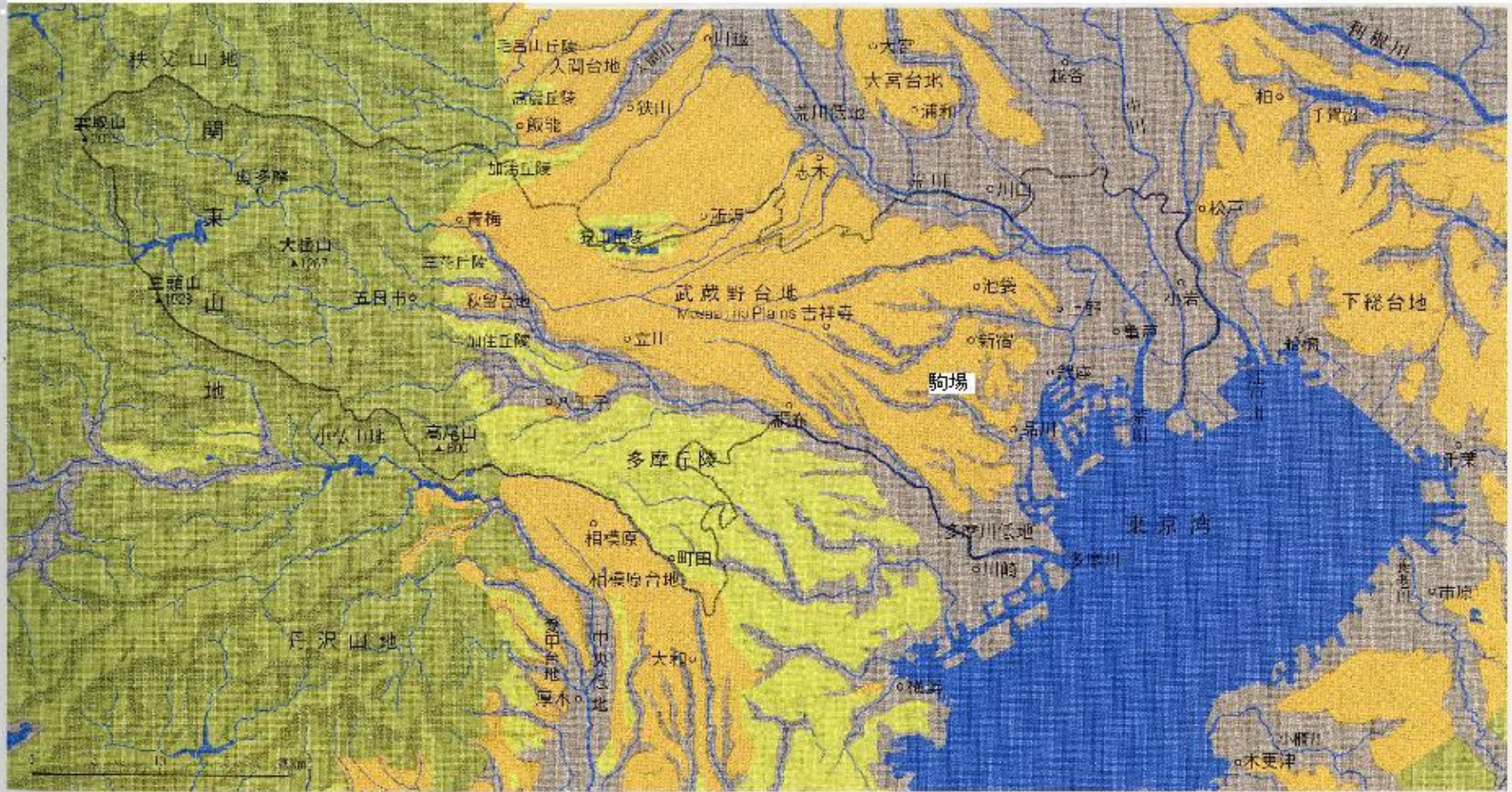


Global Focus on Knowledge Changing Cities 3

Dealing with Disasters

April 23, 2008

Jun Suzuki, Department of Japanese History, Faculty of Literature



東京都の地形 Topography of Tokyo

Lowlands Plateaus Hills Mountains

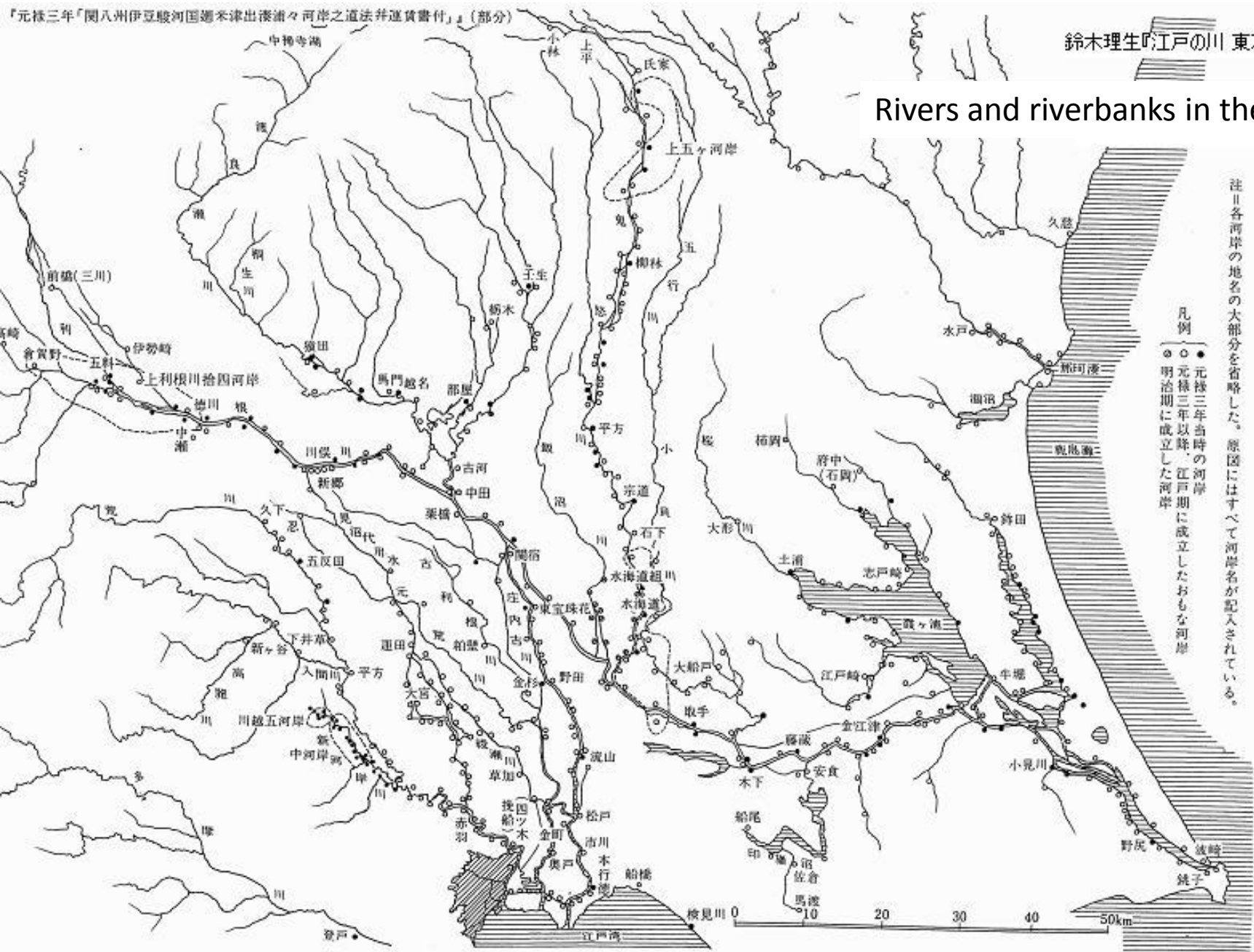
‡ “Chizu de yomu Edo～Tokyo (Analyzing Edo and Tokyo Through Atlas)” Yasuo Masai (Heibonsha, 1986)

‡: The figures, photos and moving images with ‡ marks attached belong to their copyright holders. Reusing or reproducing them is prohibited unless permission is obtained directly from such copyright holders.

『元禄三年「関八州伊豆駿河国邊米津出漕浦々河岸之道法并運賃書付」』(部分)

鈴木理生『江戸の川 東京の川』より

Rivers and riverbanks in the Edo Era



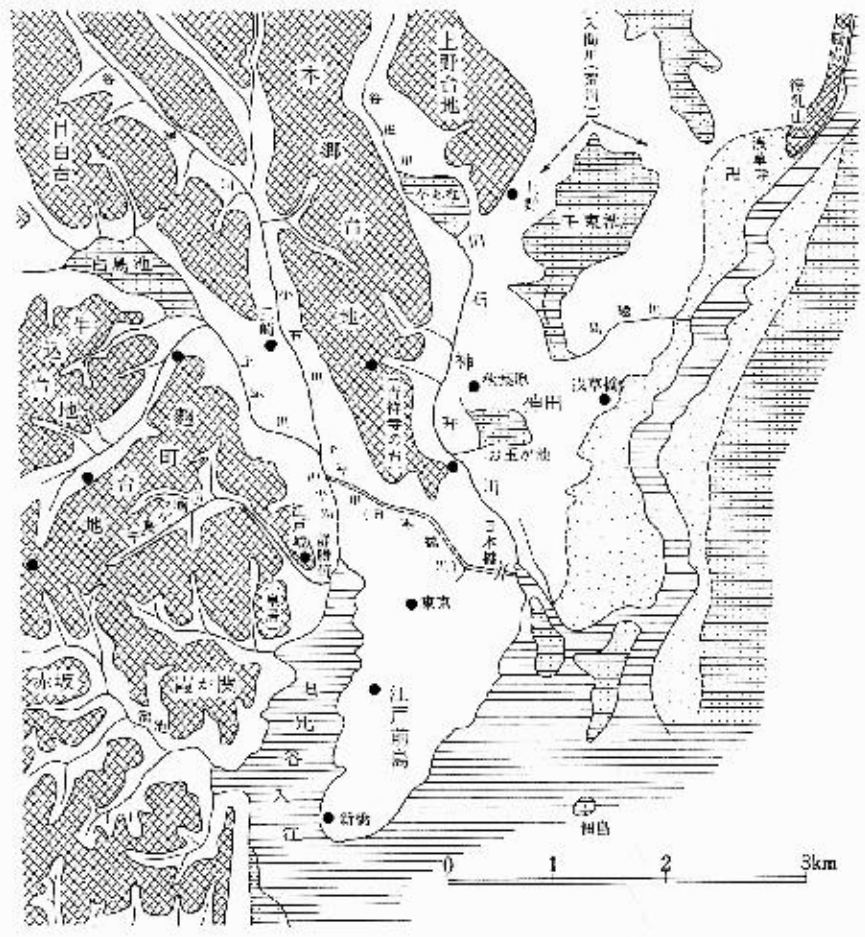
注) 各河岸の地名の大部分を省略した。原因にはすべて河岸名が記入されている。

凡例

- 元禄三年当時の河岸
- 元禄三年以降、江戸期に成立したおもな河岸
- 明治期に成立した河岸

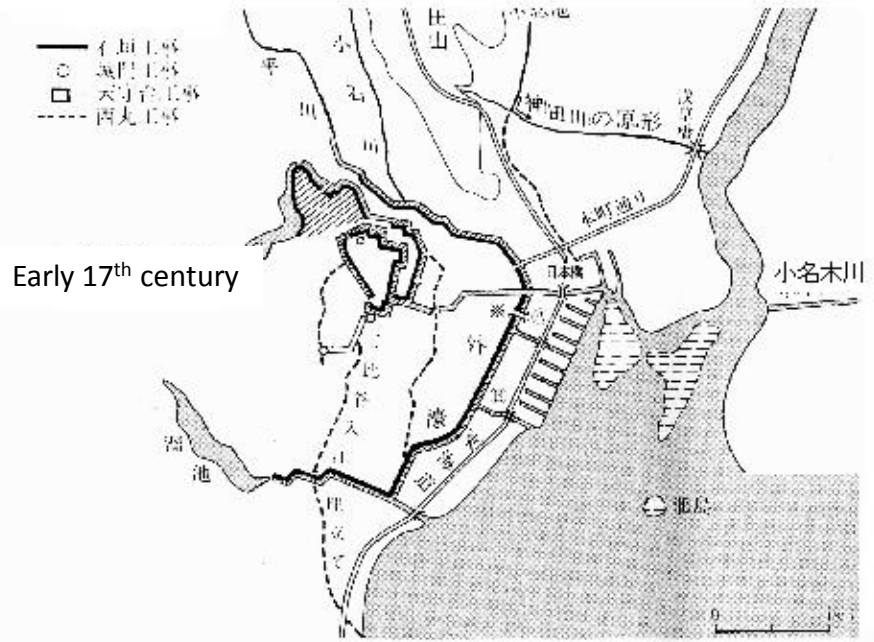
‡From *Edo no Kawa, Tokyo no Kawa* (Rivers of Edo, Rivers of Tokyo) by Masao Suzuki Inoueshoin (1989)- v . Edo wo sasaeta kawagishi(Riverbanks Supporting Edo) Fig29”Piers in Kanto Area”

Formation of Edo

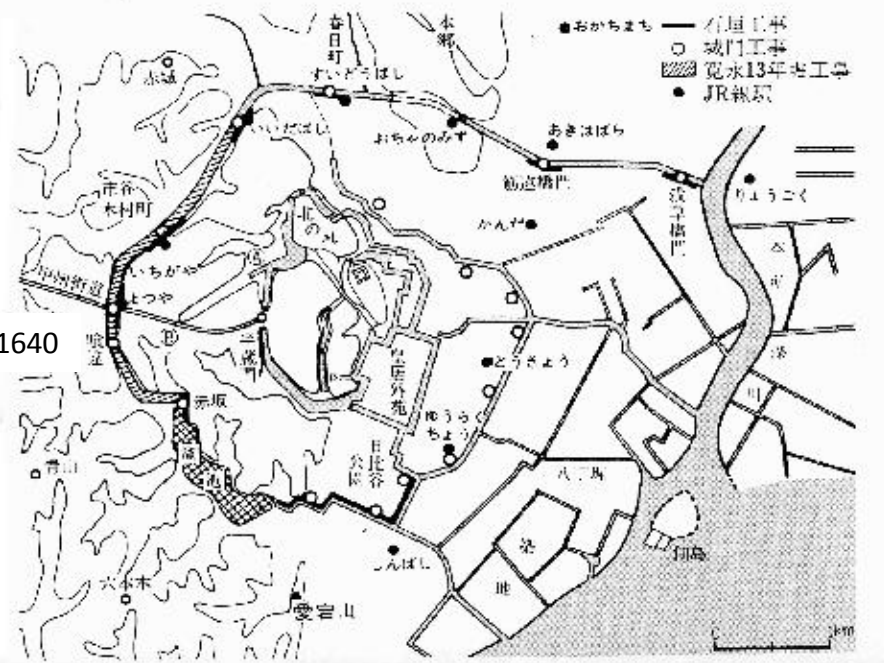


- 筑波野台地
- 自然沈降により陸化した土地
- 洲または陸化したつつある低湿地
- 新造地
- 平川つづかえ流路と日本橋

Edo harbor (15th century)



Early 17th century



Around 1640

‡From *Edo no Kawa, Tokyo no Kawa* (Rivers of Edo, Rivers of Tokyo) by Masao Suzuki Inoueshoin(1989)-(left) III Piers Located on Edo in Middle Ages Fig.14 Piers in Edo When Dokan Governed Edo, (Upper right)Fig.22 Remodeling of Edomaeshima, (Lower right)IV Completion of Edo Castle modified Fig.26

按針町

Anjin-cho

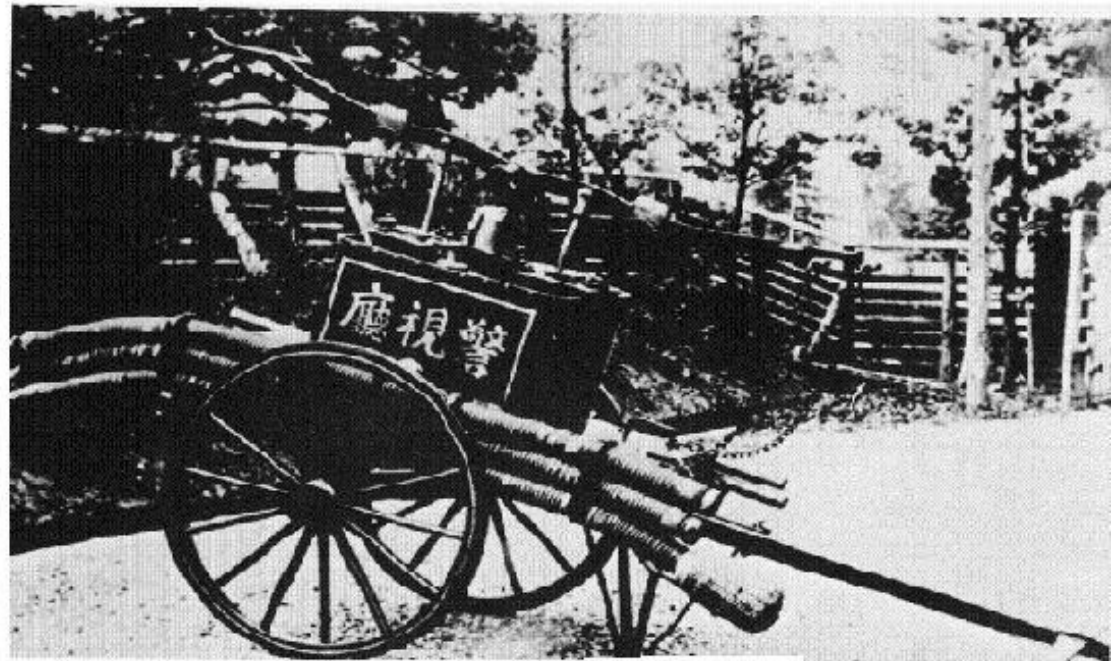
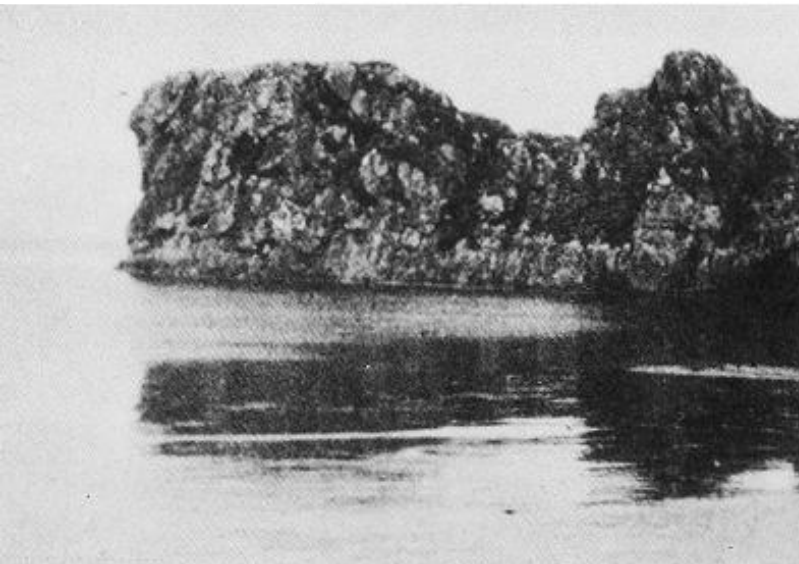


Street scene near Nihonbashi in
the early years of Meiji (1870s)

The Far East June 17, 1872 Bunmei Kaika no Yokohama – Tokyo
(Westernization of Yokohama – Tokyo) Museum of Yokohama Urban History,
Yokohama Archives of History



Manual pump



山形県酒田市飛島婦人消防組

『写真図説 日本消防史』より

Asuka women's fire brigade in Sakata City, Yamagata Prefecture
From *Shashin Zusetu Nihon Shoboshi* (Pictorial History of Firefighting in Japan)



Utagawa Hiroshige *Edo no Hana* (Flowers [Fires] of Edo) from *Shashin Zusetsu Nihon Shoboshi* (Pictorial History of Firefighting in Japan), published by Kokusho Kankokai, 1984

寺内内火災といひ脱き金居小住居智まで

津波の入りし船達よとこまに食の多き

は地を海に沈み小島も吞一物一倉の數多

白の荒布若う四方とて小は下り食の數と

る下り又化下り一物一倉の家は思ふ

止るまは震前掃蕪一土の散れせ一侍の

實に秋風小書さうか勝ち悉く下り侍

さういへといひ世侍り又侍り一かまは今

暮すあそび一地をまきの入あそび一む

けし下り天鼓をひらひせん天鼓なう一ひ

又侍とといふまの



△折を欠着のりひ伝書ふゆるといひ高代の人人狂まふ知るものじ

まの午年来のりひ賜ふるす下り人疑ふむ自むへう人衆は

いそいでるる食の和とふ紀を○文政十三家辛五月も来所を月侍

○天保乙辰年二月武来金を月侍り因乙未年七月百文強を月侍り

○岡七年法不月以百文月未武金八夕飢死りのむ多一見より

茶七十の年以辰天明乙未百文月之食又岡七未年百文月之食

も侍并多の法不米香と方騒騒乱多し由より然る不衣天保未年

稲者所成松木て角力の人天驚愕又芝張の中村秋右衛門の衣法

多とあり又不飢腹の侍不あり是是全く公より小救のを厚るふ

不不ふと一○天保八百年乙亥判を分派を月侍り○同九年未

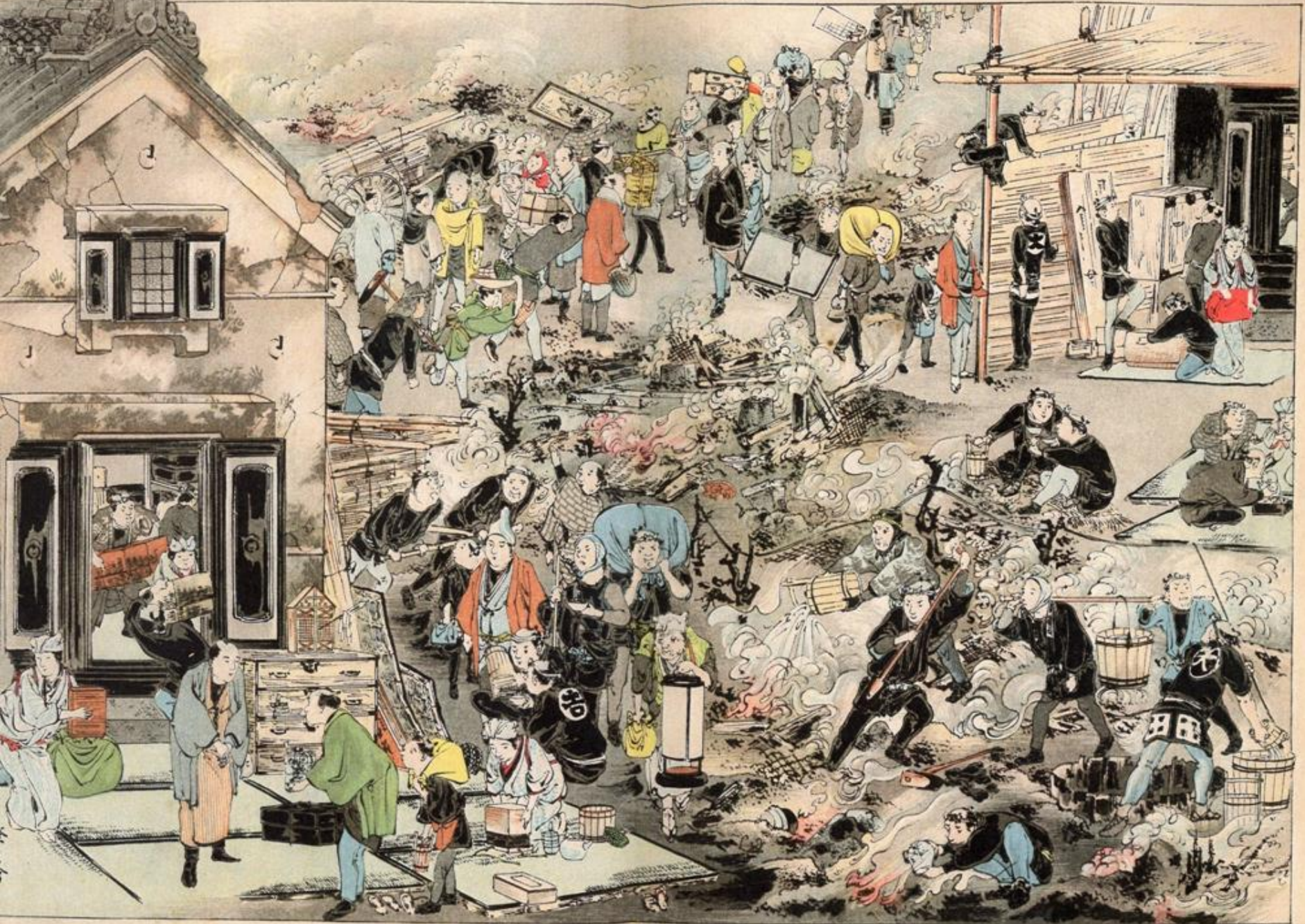
ふ不作百文月未乙亥分判救物○十二丑年十月十日より天

乙辰の法多し智地所花女を拵侍若起金徳蓮上小免と

安政見聞誌

一

Ansei Kenmonshi (An account of the Great Ansei Earthquake in 1855)





Fuzoku Gaho (Illustrated Monthly Magazine) No. 186, Meiji era
Imperial fire brigade, April 1899



Steam pump and extension ladder of the Metropolitan
Police Department in late Meiji era – Team of horses



Steam pump used in fighting the Great West Kanda Fire in 1913

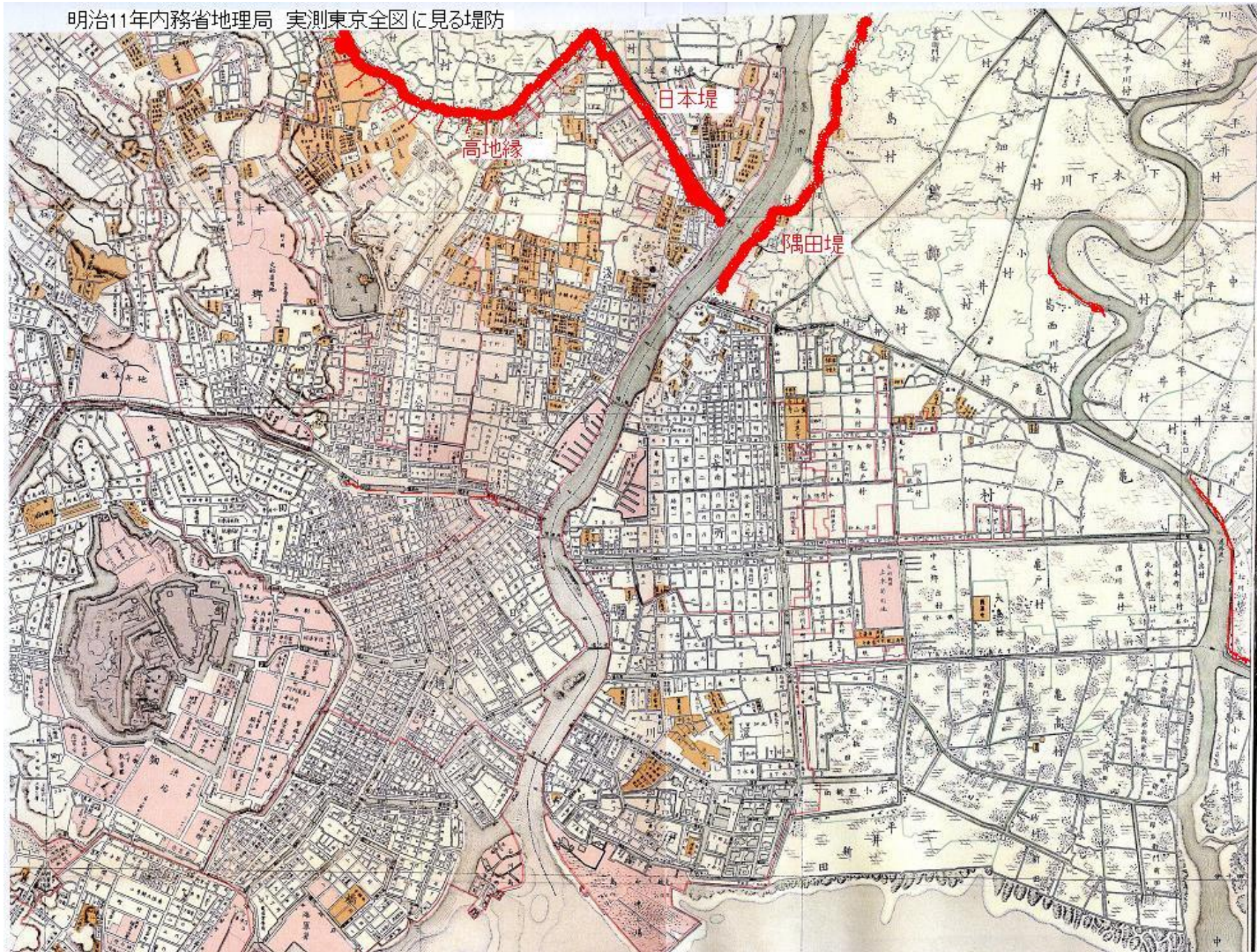
Shashin Zuzetsu Nihon Shoboshi (Pictorial History of Firefighting in Japan)

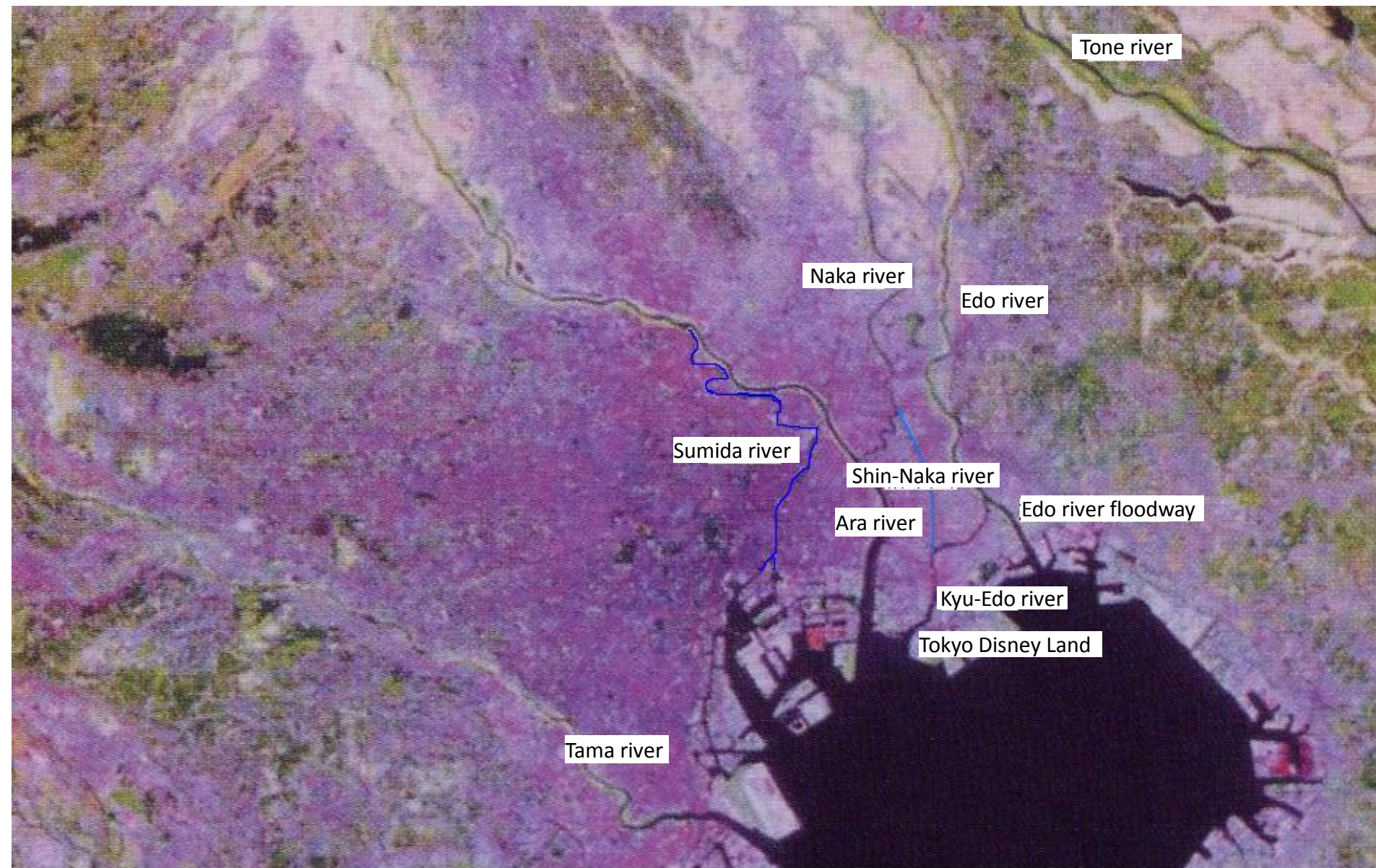
Ginza Renga-gai (street lined with brick buildings)
Looking toward Kyobashi from the 4-chome intersection



The Far East June 1874 Bunmei Kaika no Yokohama – Tokyo (Westernization of Yokohama – Tokyo) Museum of Yokohama Urban History, Yokohama Archives of History (Yurindo, 2007)

明治11年内務省地理局 実測東京全図に見る堤防





‡Photo from *Arakawa Karyushi: Shiryohen* (Ara River Downstream: Data File)

Edited by committee for compiling record of Ara river downstream Tokyo, published by foundation for river front improvement and restoration Tokyo, sold by Tokyosankaido (02/2005), p3 pic.1



Mechanized dredging

Transporting materials by handcart



Construction work on the Arakawa canal



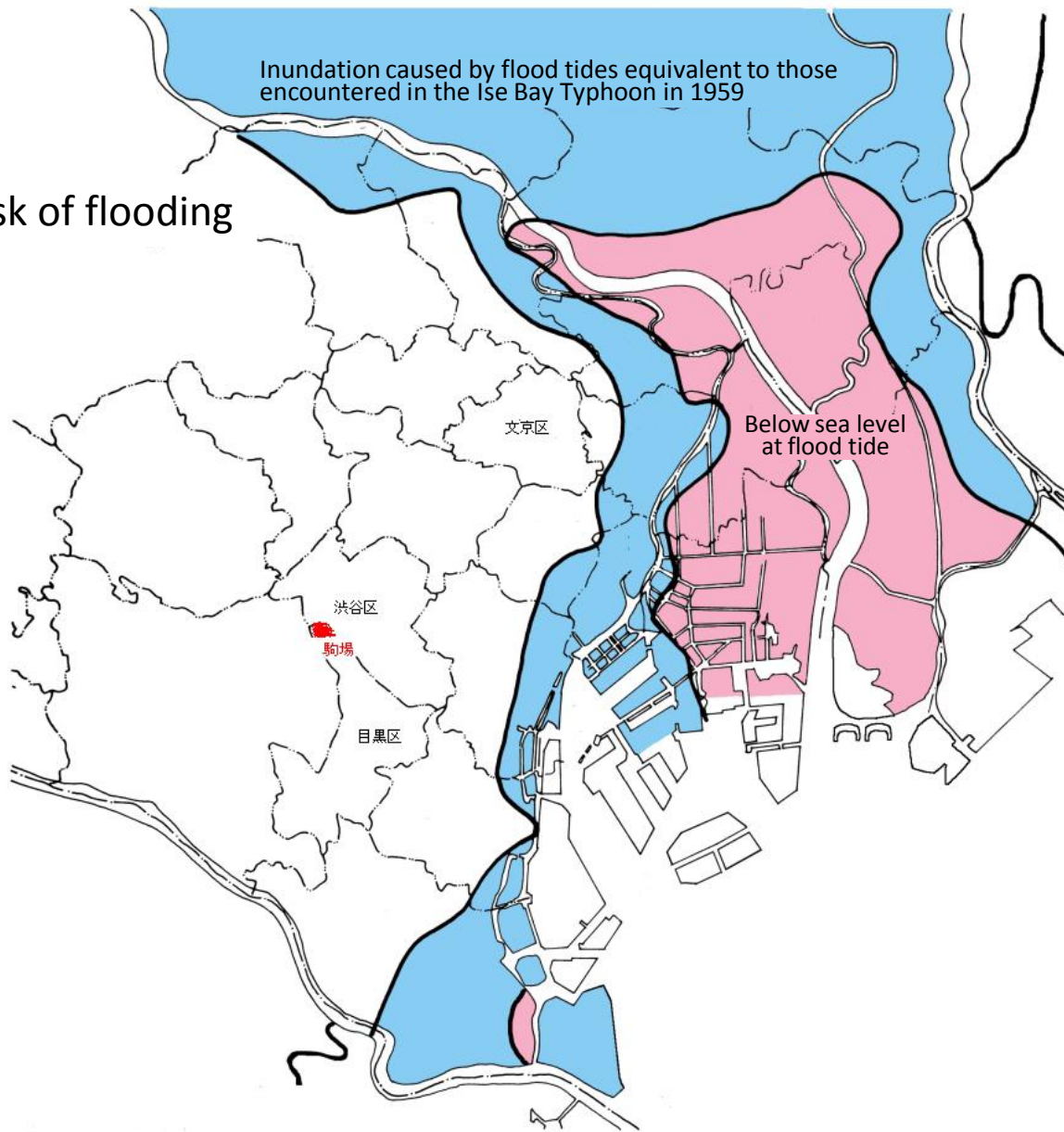
Dredge



‡From *Arakawa Karyushi: Shiryoheh* (Ara River Downstream: Data File)
Edited by committee for compiling record of Ara river downstream Tokyo,
published by foundation for river front improvement and restoration Tokyo, sold by
Tokyosankaido (02/2005), p43 pic.41

Inundation caused by flood tides equivalent to those encountered in the Ise Bay Typhoon in 1959

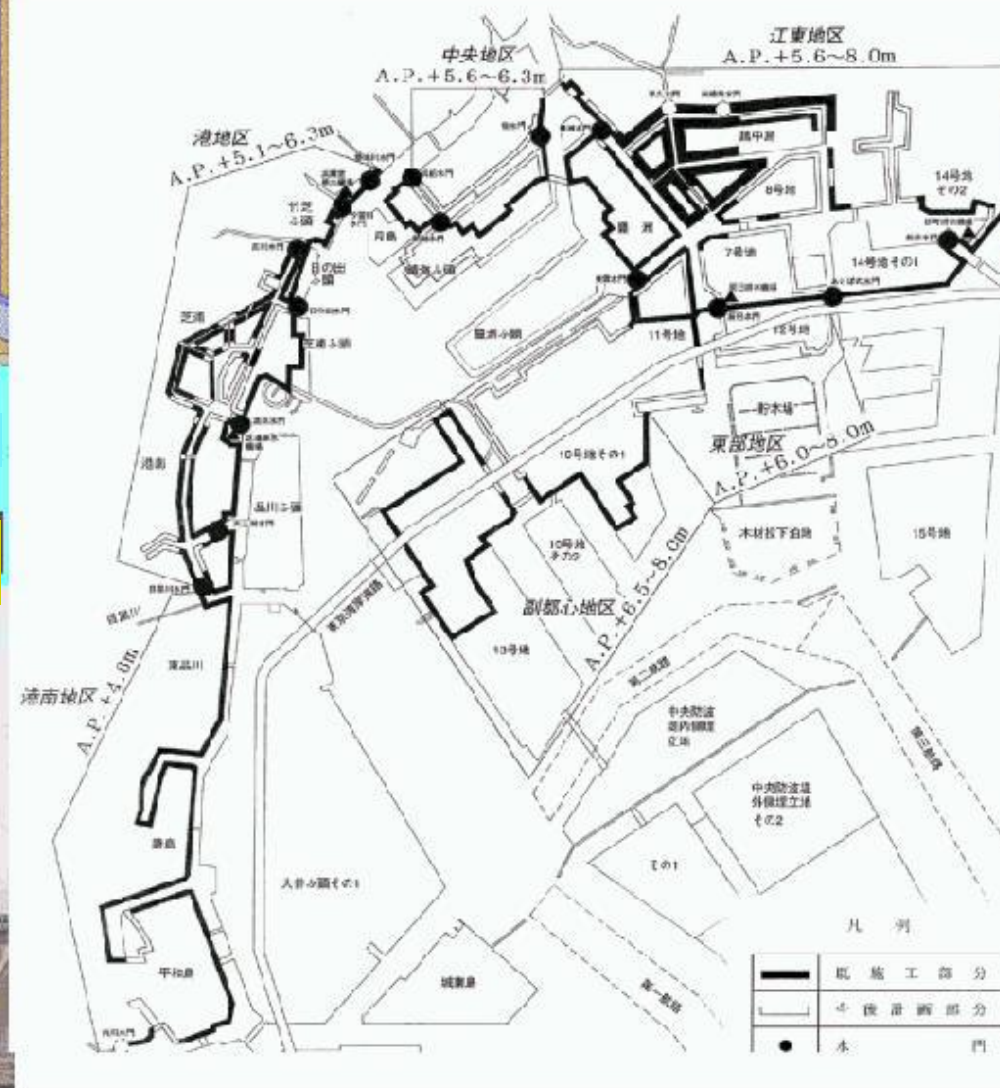
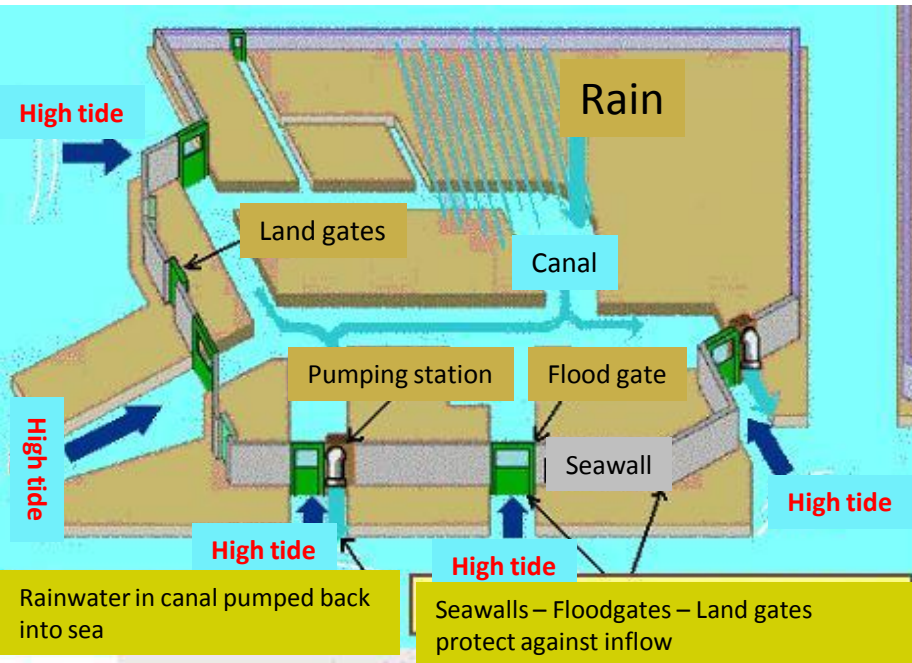
Areas at risk of flooding



〒Port Bureau, Tokyo Metropolitan Government

<http://www.kouwan.metro.tokyo.jp/jigyotakashio/index.html> (modified by Jun Suzuki)

Countermeasures against high tides



Upper left

Port Bureau, Tokyo Metropolitan Government

<http://www.kouwan.metro.tokyo.jp/jigyo/takashio/index.html> (modified by Jun Suzuki)