

# **Changing Contemporary Cities**

**Lecture of Global Focus on Knowledge: 2**

**Hiroyuki Suzuki**

**The figures, photos and moving images with trademarks attached belong to their copyright holders. Reusing or reproducing them is prohibited unless permission is obtained directly from such copyright holders.**



# Marunouchi



‡ By courtesy of Hiroaki Honda  
Sanko estate Ltd.



# Toranomon

‡ By courtesy of Hiroaki Honda  
Sanko estate Ltd.





# Oosaki



‡ By courtesy of Hiroaki Honda  
Sanko estate Ltd.



# Shinagawa



‡ By courtesy of Hiroaki Honda  
Sanko estate Ltd.



# Shiodome



‡ By courtesy of Hiroaki Honda  
Sanko estate Ltd.



# Shinjuku

‡ By courtesy of Hiroaki Honda  
Sanko estate Ltd.





# Akasaka



† By courtesy of Hiroaki Honda  
Sanko estate Ltd.



# O-temachi



‡ By courtesy of Hiroaki Honda  
Sanko estate Ltd.



# Ikebukuro



‡ By courtesy of Hiroaki Honda  
Sanko estate Ltd.



# Tamachi



† By courtesy of Hiroaki Honda  
Sanko estate Ltd.



# Rinkai



‡ By courtesy of Hiroaki Honda  
Sanko estate Ltd.



# Roppongi



† By courtesy of Hiroaki Honda  
Sanko estate Ltd.



## Marunouchi 2



‡ By courtesy of Hiroaki Honda  
Sanko estate Ltd.



## Toranomon 2



‡ By courtesy of Hiroaki Honda  
Sanko estate Ltd.



## Shibuya 2



† By courtesy of Hiroaki Honda  
Sanko estate Ltd.



## Nishi Shinjuku 2



† By courtesy of Hiroaki Honda  
Sanko estate Ltd.



## Akasaka 2



‡ By courtesy of Hiroaki Honda  
Sanko estate Ltd.



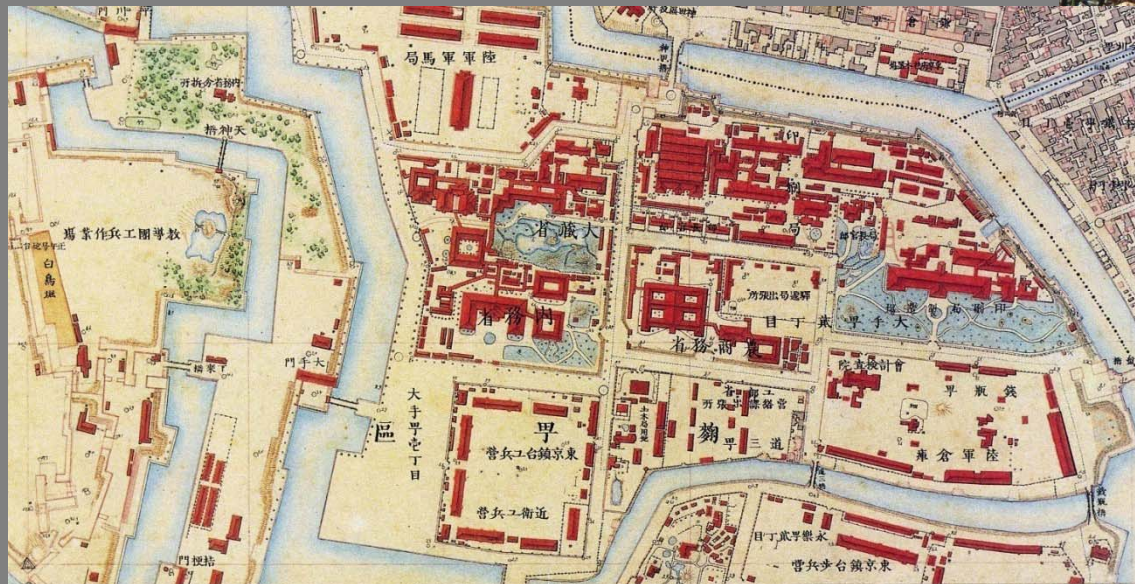
# Oosaki 2



‡ By courtesy of Hiroaki Honda  
Sanko estate Ltd.



# Rhapsody around Tokyo



‡ By courtesy of Geospatial Information  
Authority of Japan 『1/200,00 The survey of the  
staff headquarters』





Around Tokyo Station in 1976

‡ By courtesy of Hiroaki Honda  
Sanko estate Ltd.



## Tokyo Station in 2006



‡ By courtesy of Hiroaki Honda  
Sanko estate Ltd.

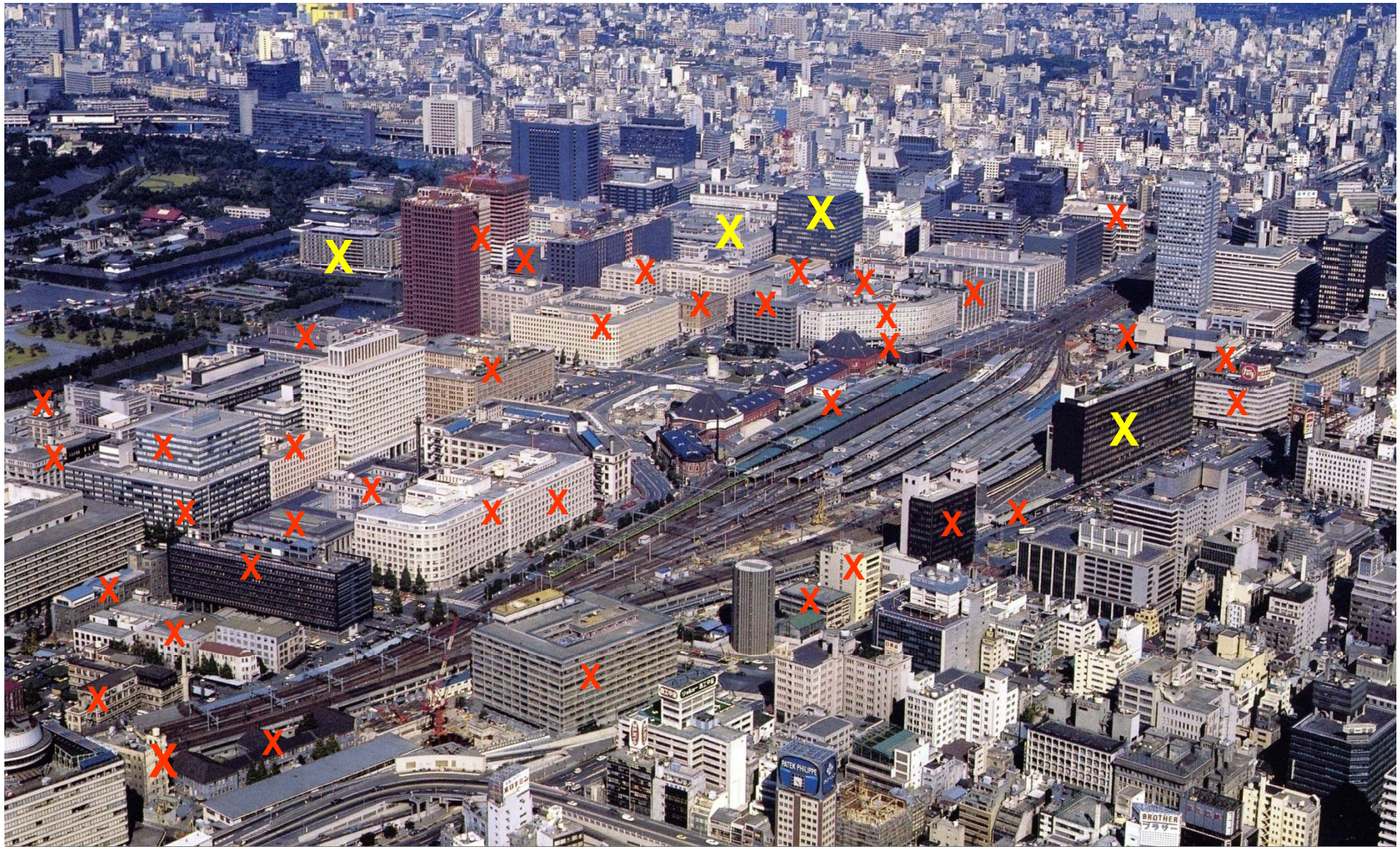


## Tokyo Station in 2007



‡ By courtesy of Hiroaki Honda  
Sanko estate Ltd.





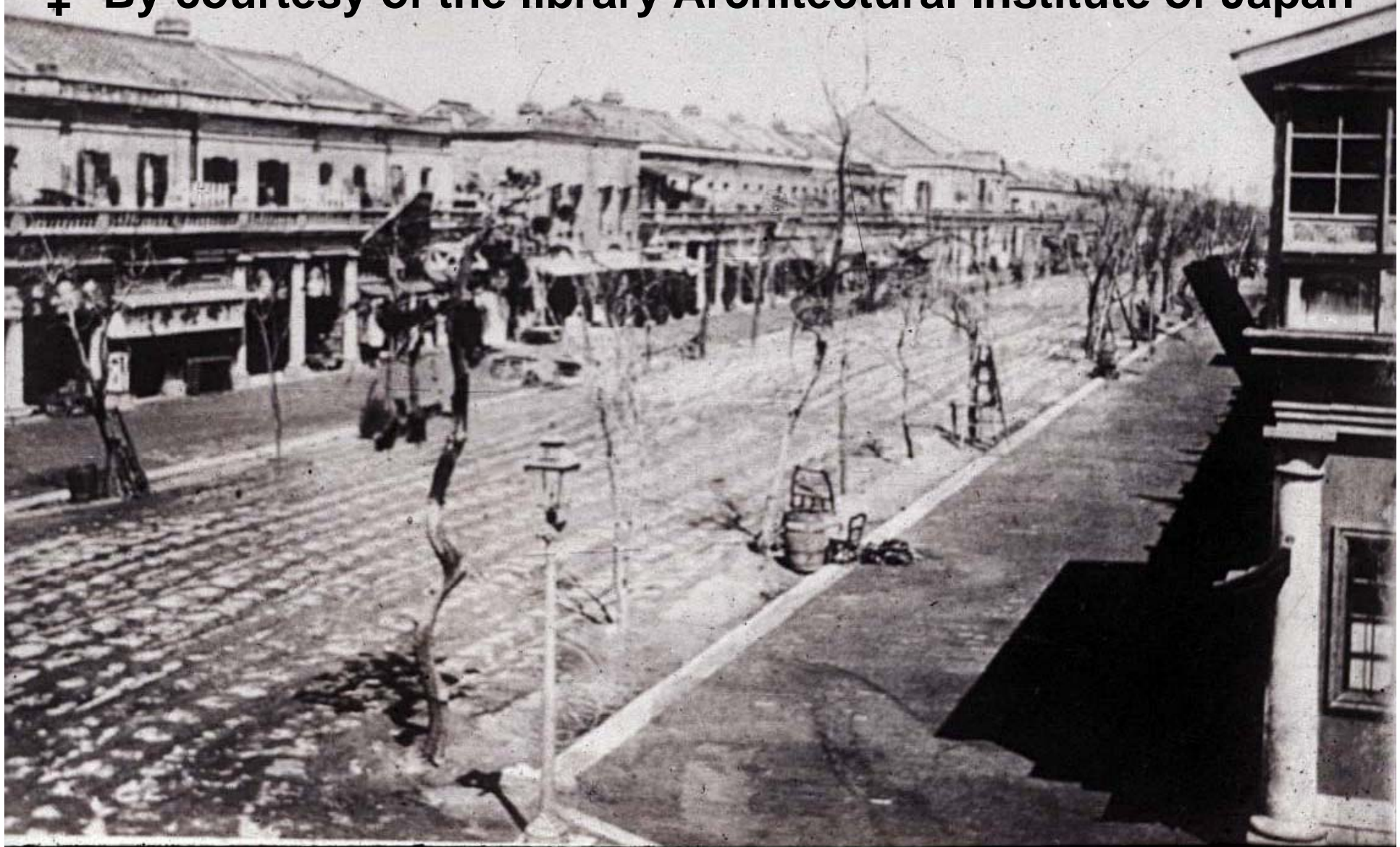
# Around Tokyo Station in 1976

‡ By courtesy of Hiroaki Honda  
Sanko estate Ltd.



# Ginza, Tokyo (1872-1923)

‡ By courtesy of the library Architectural Institute of Japan







‡ By courtesy of the library Architectural Institute of Japan  
Ryo-un Kaku, Asakusa (1980-1923)



# Ryo-un Kaku, Asakusa (1980-1923)



‡ By  
courtesy of  
the library  
Architectural  
Institute of  
Japan

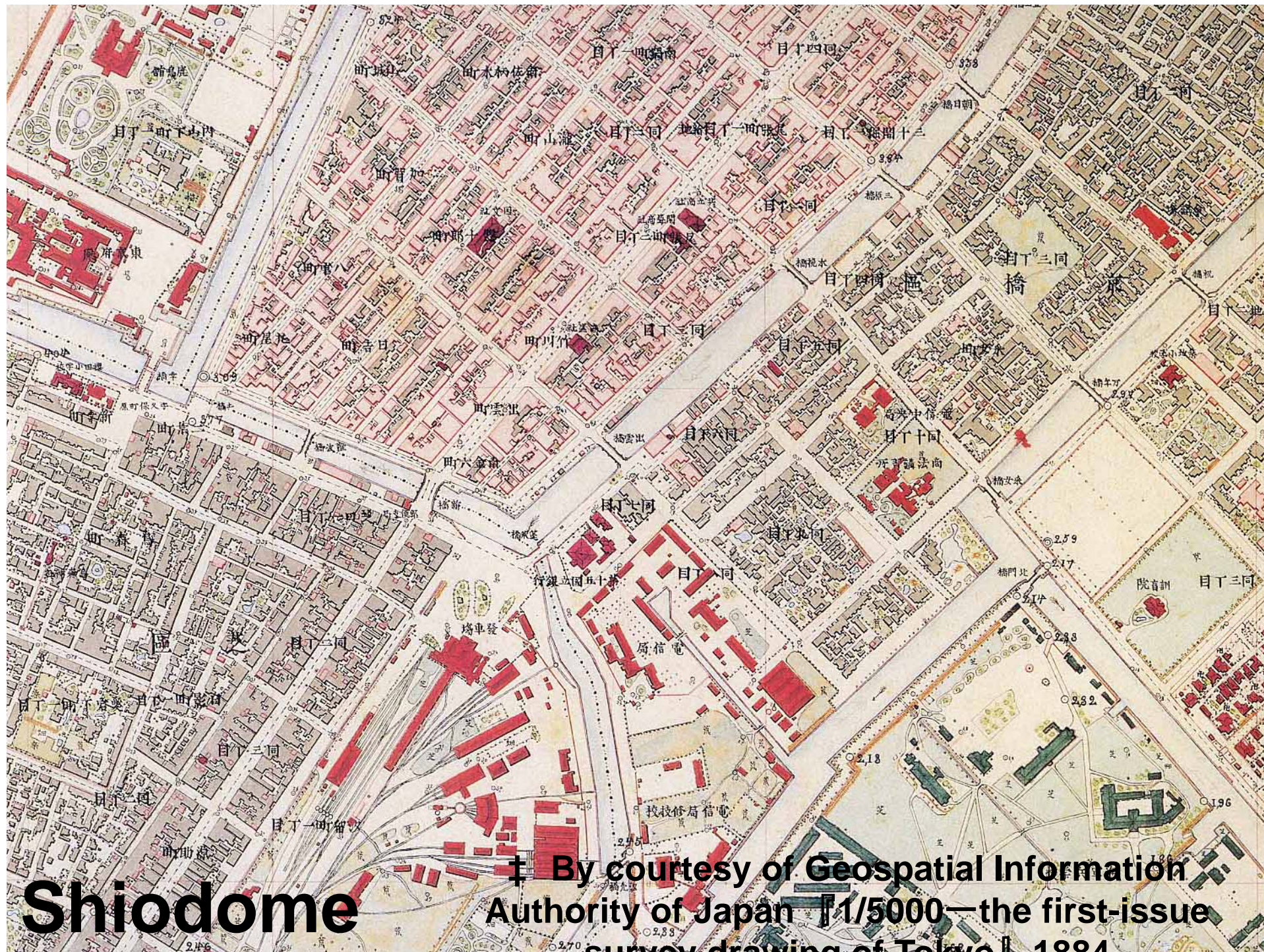


‡ By courtesy of the library Architectural Institute of Japan



Shinbashi Station (1872-1923)





**Shiodome**

† By courtesy of Geospatial Information  
Authority of Japan 『1/5000—the first-issue  
survey drawing of Tokyo』 1884





**Shiodome before**





**Shiodome after**





**Shiodome after**





**Restoration of historic station**



**Shiodome  
after**







# Shiodome and water



**Historic garden  
(above)  
and  
Fish Market  
(left)**





Tokyo Central Telegraph Office (1927-X)





# Reader`s Digest Tokyo (1951 — 1967)

‡: By courtesy of Raymond Archtectural Design Office  
<http://www.raymondsekkei.co.jp/founder/02-1.html>





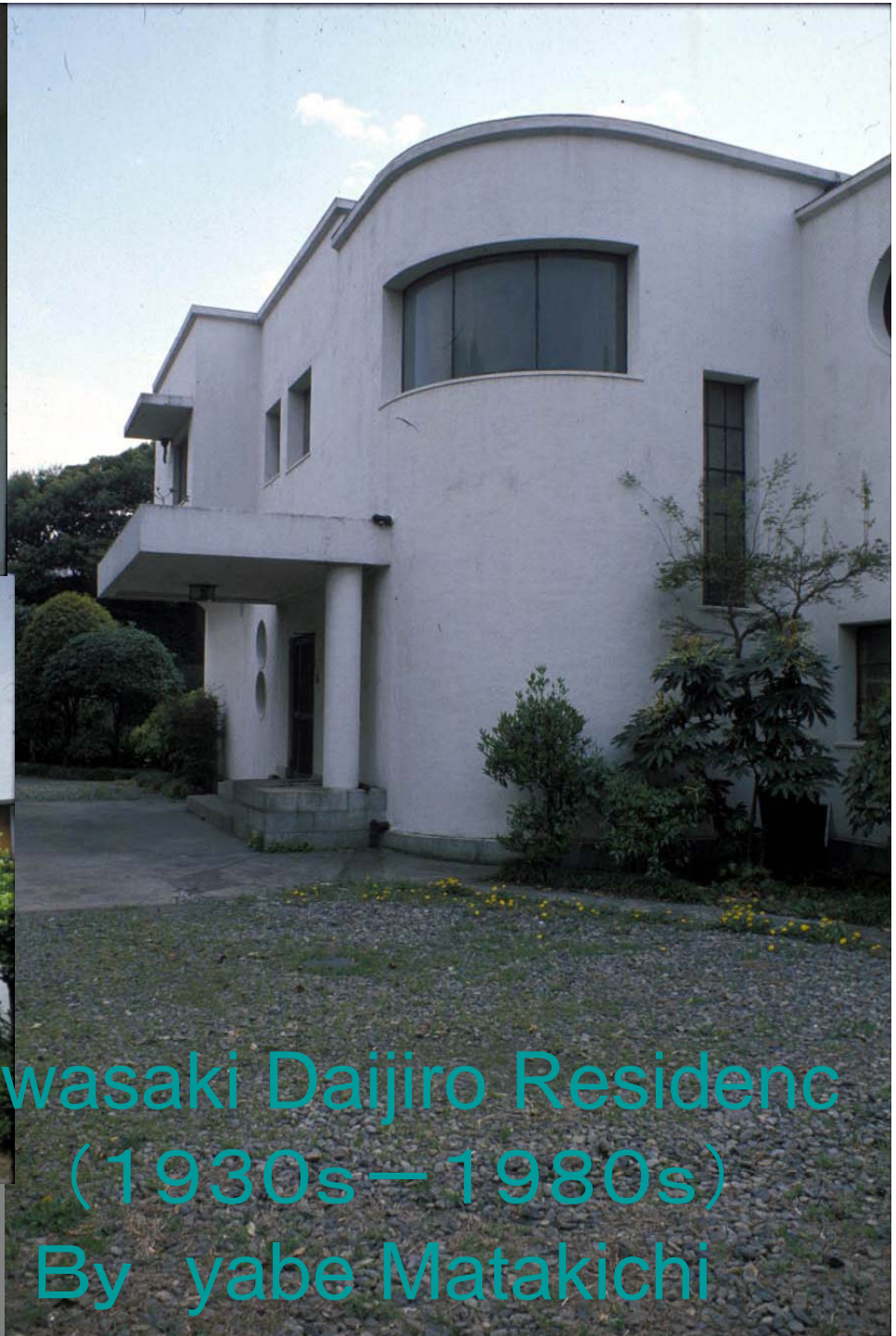
Imperial Hotel (1923-1968)





Imperial Hotel (1923-1968)





Kawasaki Daijiro Residence  
(1930s—1980s)  
By Yabe Matakichi

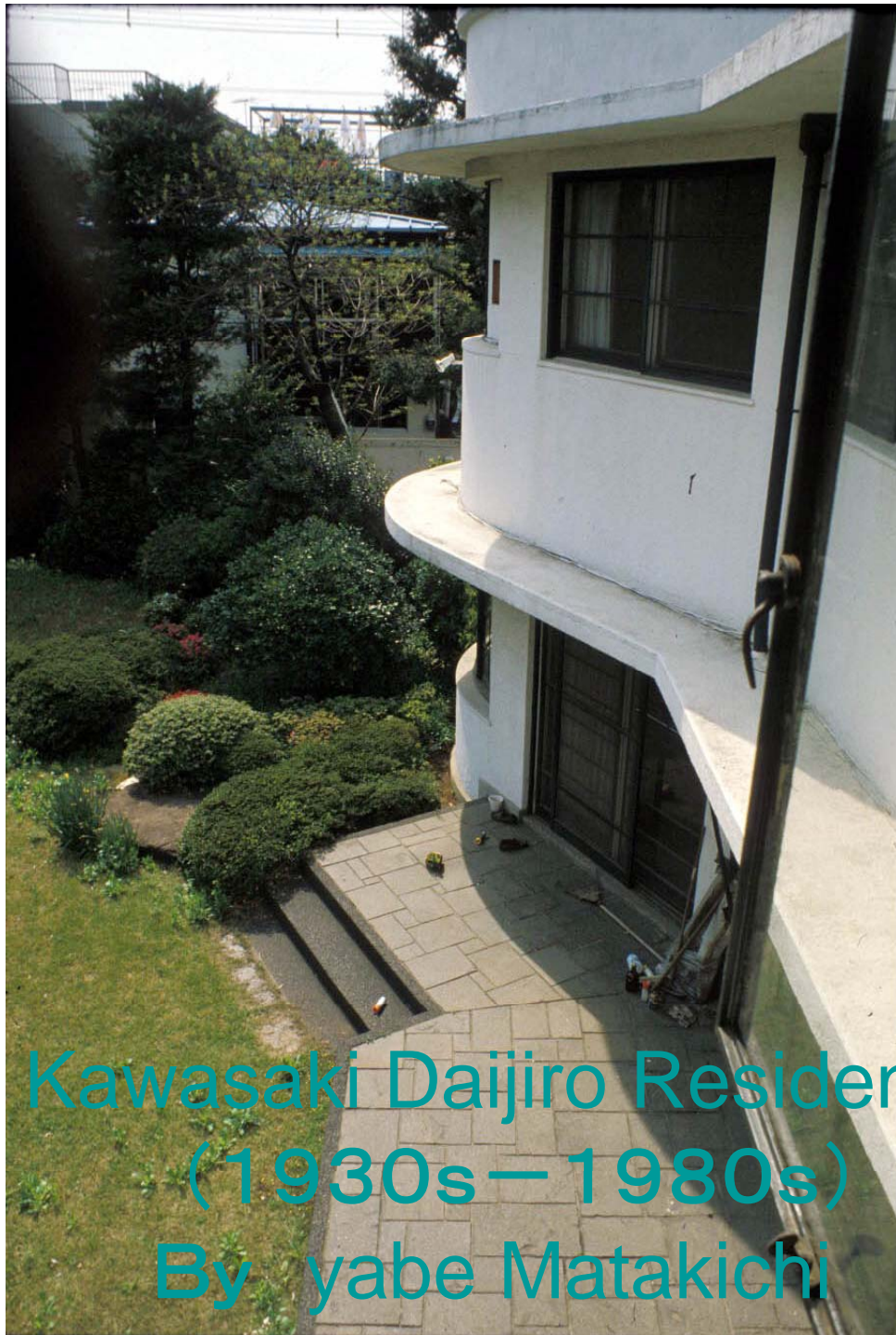




Kawasaki Daijiro Residence (1930s — 1980s)

By Yabe Matakichi





Kawasaki Daijiro Residence  
(1930s—1980s)  
By Yabe Matakichi





Kawasaki Daijiro Residence (1930s—1980s)  
By Yabe Matakichi





**Kawasaki Daijiro Residence  
(1930s-1980s) Yabe Matakichi**





**Aoyam Dojunkai Apartment House (1927-2004)**





**Edogawa  
Dojunkai Apartment House  
(1927-2004)**





**Tokyo Station  
(1914-)  
Tokyo Central  
Post Office  
(1931-)**

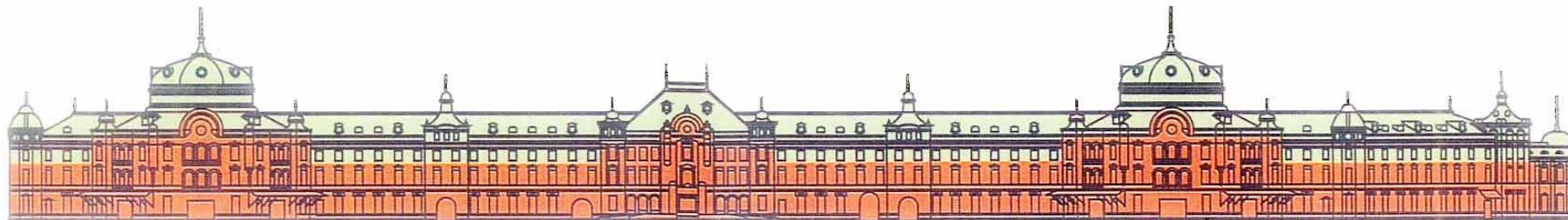






**Tokyo Station and Tokyo Central Post Office**





Tokyo Station : then and now

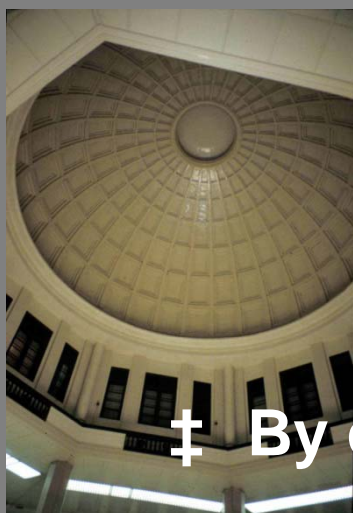
■ Original Elev.  
 ■ Present Elev.  
 ■ 復元部分  
 ■ 保存部分



# Tokyo Station

Restoration plan

† By courtesy of East Japan railway Co., Ltd

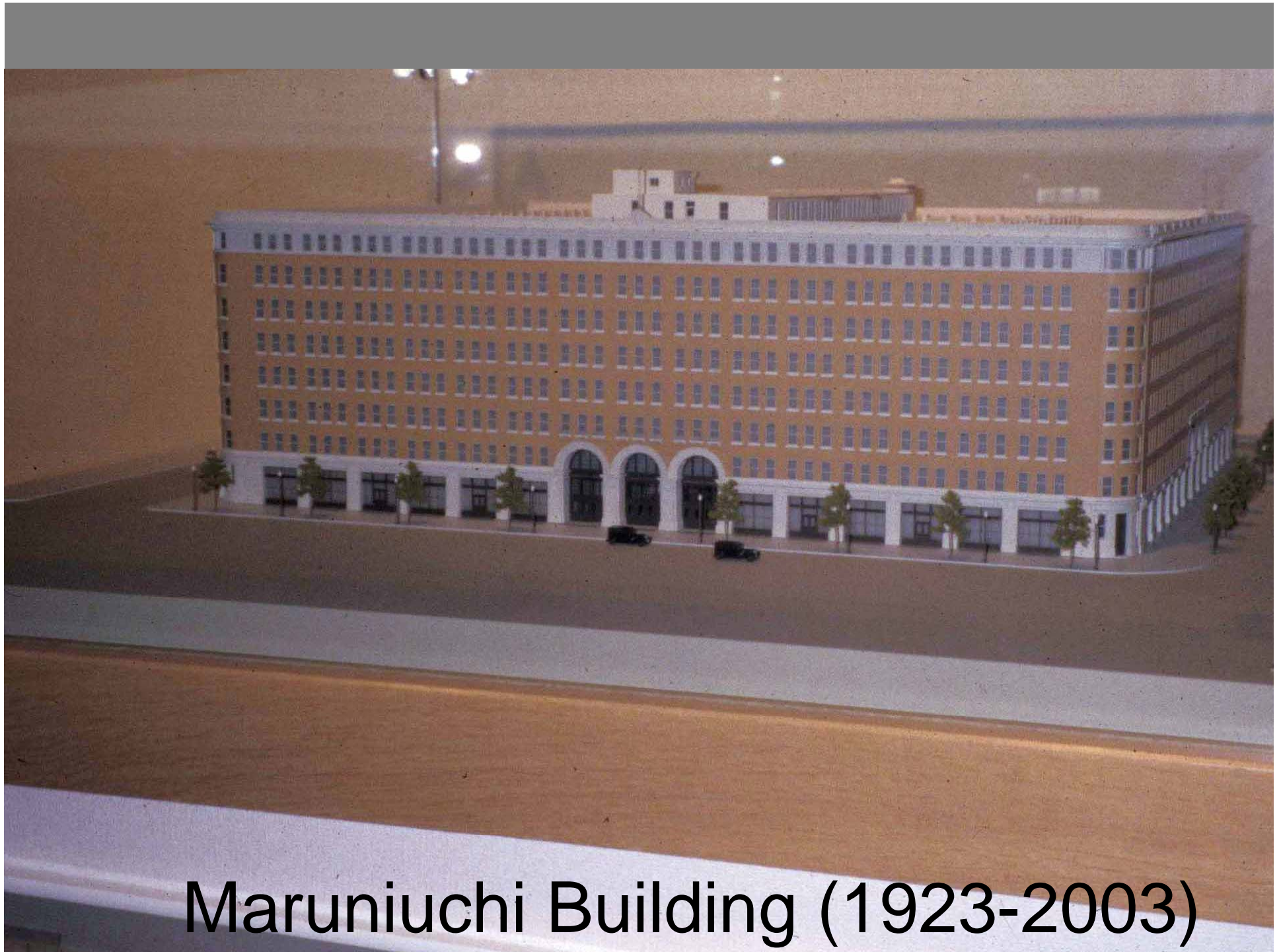




# Marunouchi Building (left) and New Marunouchi Building (right)







Maruniuchi Building (1923-2003)



# Rebuilding of Marunouchi Building

† By courtesy of Hiroaki Honda  
Sanko estate Ltd.





# Marunouchi Building New Reconstruction





Meiji  
Seimei Kan  
(1934—)

(Meiji Life Insurance Building)







Meiji Seimei Kan and its New Wing





Meiji Seimei Kan and its New Wing



Nikkatsu  
Kokusai Hall  
(1958—2005)







From Nikkatsu Kokusai Hall : Moat





# Tokyo Metropolitan Hall (1957-1986)

‡ By courtesy of TODA Co.

[http://www.toda.co.jp/company/history/images/history04\\_ph002.jpg](http://www.toda.co.jp/company/history/images/history04_ph002.jpg)





Harumi Apartment House (1958-2003)





International House (1955-)





International House (1955-)





International House (1955-)